

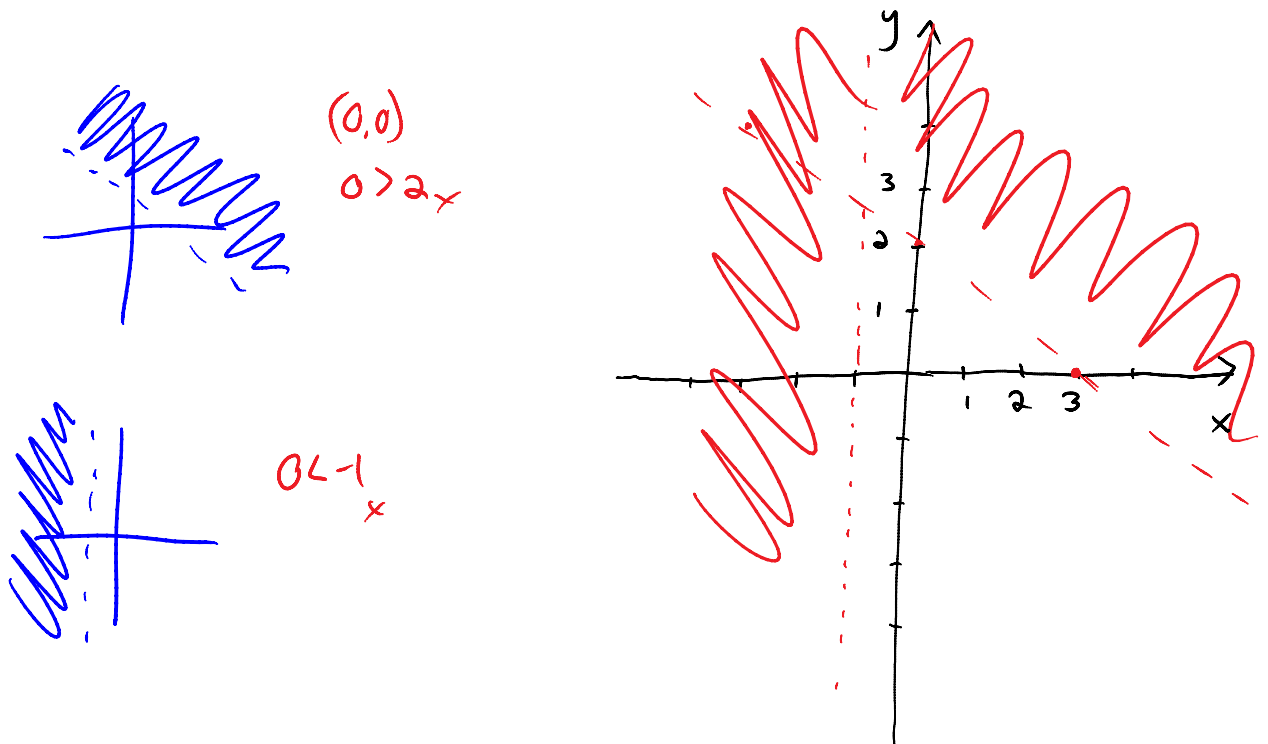
Section 3.4: cont'd

Tuesday, October 22, 2013

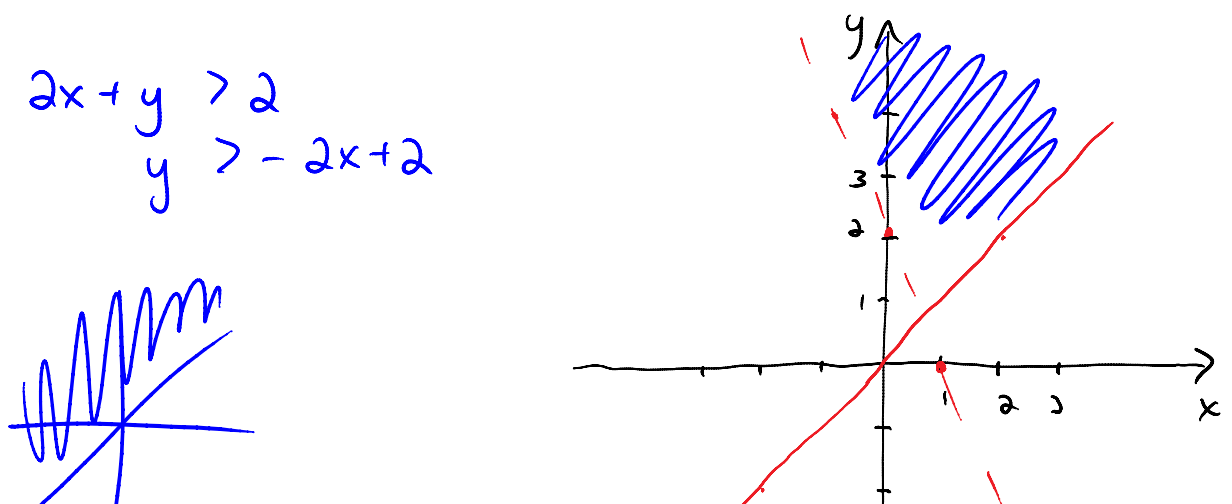
8:30 AM

compound inequalities:

example: graph $y > -\frac{2}{3}x + 2$ or $x < -1$



graph $y \geq x$ and $2x + y > 2$





note: when graphing compound inequalities,
you MUST show the intersection!

(change scale or continue lines off
the graph if necessary)

NOTE: omit absolute value inequalities!