

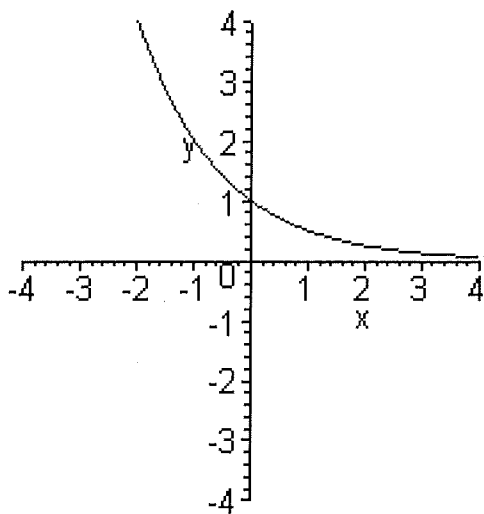
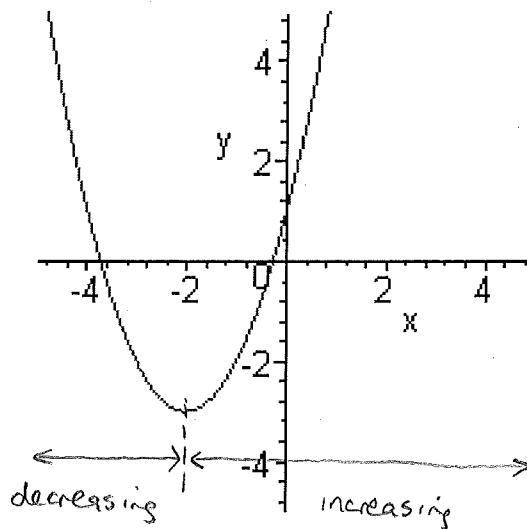
Math 173 – Section ~~2.1~~: Features of Graphs**Increasing and decreasing functions**

If the graph of a function for a given interval rises from left to right, then the function is said to be increasing.

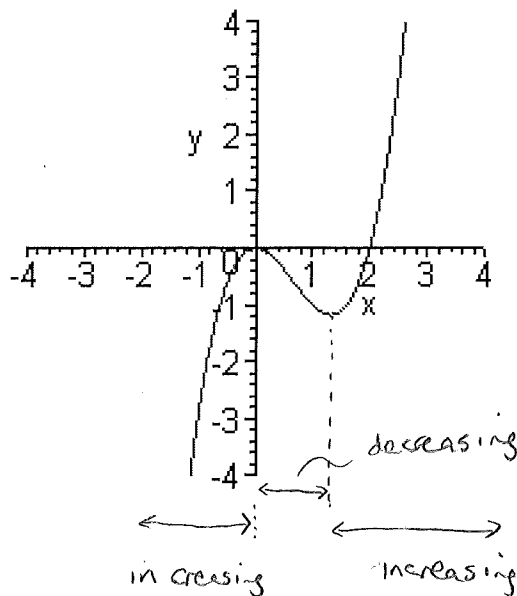
If the graph falls from left to right, then the function is said to be decreasing.

If the graph stays the same, then the function is said to be constant.

For the following graphs, label the increasing and decreasing intervals.



decreasing  
(everywhere)



## Absolute maxima and minima, relative maxima and minima

For the following graphs, label the maxima and minima, stating whether they are absolute or relative. Also, label the regions where the graphs are increasing or decreasing.

