

Section 1.2: cont'd

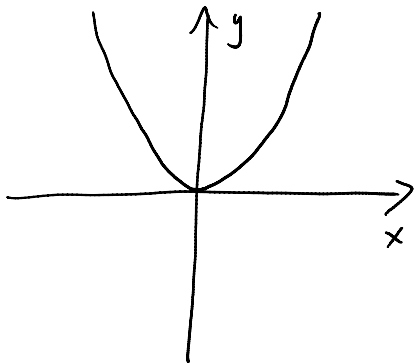
Thursday, January 14, 2016
10:29 AM

domain and range of a function:

domain \equiv set of all possible x -values

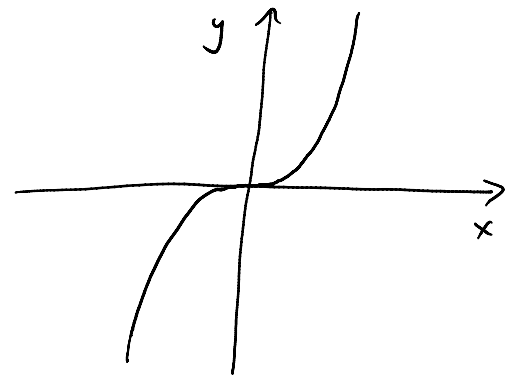
range \equiv " " " " y -values

examples: state the domain and range of the following functions.



domain: \mathbb{R}
or $(-\infty, \infty)$

range: $\{y \mid y \geq 0\}$
or $[0, \infty)$



domain: \mathbb{R}

range: \mathbb{R}

recall from Math 172:

what is the domain of $y = \frac{1}{x+3}$

domain: $\{x \mid x \neq -3\}$
 $(-\infty, -3) \cup (-3, \infty)$