

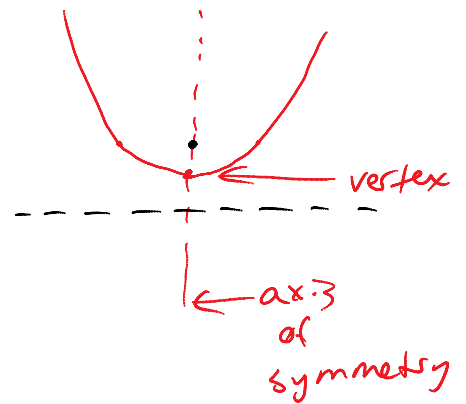
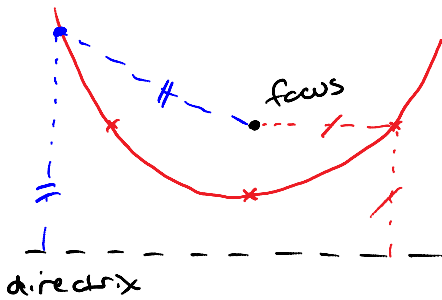
Section 10.1: Parabola

Monday, March 07, 2016
11:04 AM

conic sections: circle
ellipse
parabola
hyperbola

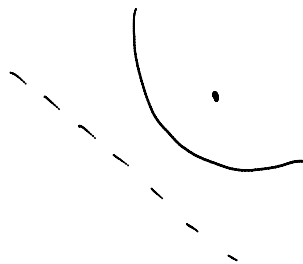
parabola: (geometric definition)

- the set of all points in a plane equidistant from a fixed point (the focus) and a fixed line (the directrix)



notice: the "shallowness" of the parabola is determined by the distance between the focus and directrix

note also: the definition doesn't use algebra or the coordinate plane, so could also have:



derivation of equation of a parabola:

