

Section 1.3/1.4: Graphs

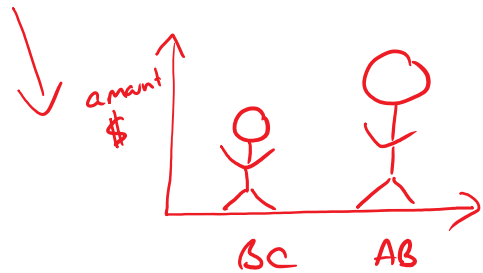
Thursday, January 10, 2019 2:22 PM

statistics software: R statistics package
(open source)

types of graphs:

for categorical data from a qualitative variable

- can use
- pie charts
 - bar charts
 - pictographs



for quantitative data,

univariate:

- pie charts
 - bar charts
 - dot plots
 - stem & leaf
 - histograms
- } not commonly used in science & eng

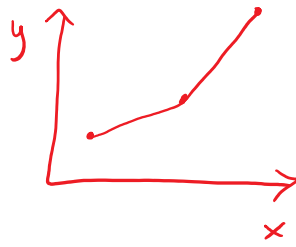
→ Section 1.5

bivariate:

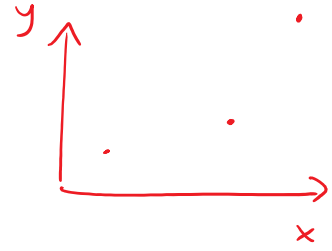
- line chart
- scatterplot

(x, y)

scatter plot



line charts
connect the dots



scatter plots don't
(often add a
least-squares fit
line)